



Simole Jaya Mandiri

Company Profile

PT Simole Jaya Mandiri

2021

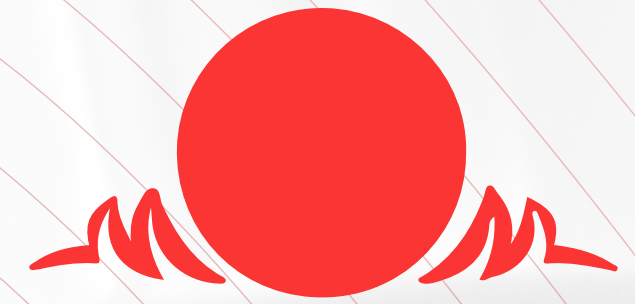
Introduction

PT. Simole Jaya Mandiri is a well established specializing in assembly, sales, and service of Hydraulic, Gas, Oil, Cement, and Water Hose. We have been in the hydraulic business for over 20 years, so you can rest assured that we are serious about what we do and work hard to keep our customer satisfied, as we have grown by providing the best possible service to our customer and our customer keep coming back to us time and time again, and should you entrust your business to us, you will receive this high level of service and commitment.

At PT. Simole Jaya Mandiri , we take pride in providing our customer with quality services and products and that means giving them access to the information they need it 24 hours a days, 7 days a week.

Any assemblies, repair undertaken by PT. Simole Jaya Mandiri are pressure tested and certified issued, when and only when the test meets the loads specification. In addition to all assemblies and remanufacturing, we also have fully equipped mobile workshop, which can assemblies hose on site, and carries an extensive range of hose and fittings.

Organization Chart



Simole Jaya Mandiri

Didi Amruhu Pramana
President Director

Dian Permadi Utama
Commissioner

Shoviyah Bahar
Vice Director

Izwan Indrajaya Moenzir
Director of Marketing

Rusdi
Head of Operation

Satam
Mechanic

Nurkelana
Driver

Fendy
Mechanic

Contents

Hoses

Industrial Rubber Hose	2
Marine Onshore/Offshore Hose	3
Composite Hose	4
High Pressure Hose	5
Synthetic Rubber Hose	6
Thermoplastic Hose	7
PTFE Hose	8
Stainless Steel Hose	9
Industrial PVC Hose	10
Quick Coupling	11-14
Instrument Valve and Fitting	15-17
Industrial Accessories	18

PT. Simole Jaya Mandiri

We are sole agent and distributor for:

TIFT

Pasificflex

SeniorFlexsonic

Radcoflex

Dantec

Pasisan Flexible

Other List:

Alfagomma	Compotec	Aeroquip	Sunsprings	Roha
Manuli	Dasan	York	Dixoon	Gates
Toyox	Aeroflex	Goodyear	Novaflex	Dunlop
Sunflex	Bulflex	Maxcok	Singaflex	Kelly Hose
Imperial Tube	Mantek	Ryco	Flextraco	Ivg
Tokico	Parker	Dayco		

Industrial Rubber Hose

Our Industrial hose is available for food, chemical, agriculture, construction, oil, naval and steel industries. Experience, Flexibility, production process on rigid mantrel, can be assembly according to customer's requirement and can be fitted with any type of coupling

Size availability	: ¼” to 12”
Working pressure	: 600 PSI
Type of Approval	: DNV, BFSC, LLOYD



Model

- Air Hose
- Oil Suction/Discharge Hose
- Water Suction
- Food Grade Hose
- Oxygen Lance Hose (LPG)
- Ducting Hose
- Chemical Delivery/Suction Hose
- Sand Blast Hose
- Steam Hose



Marine Onshore/Offshore Hose

PT. Simole Jaya Mandiri offers its customers a wide range of rubber hoses for crude oil and derivative products in oil and marine industry.

Size Availabilitiy	: 2” to 24”
Working pressure	: 3000 PSI
Type	: RINA,OCIMF,DNV

Model

- Dock Oil Hose
- Submarine Hose
- Drilling Mud & Oil Suction/Delievery Hose
- Self Floating Delivery Hose
- Fuel Vapour Recovery Hose



HOSE

Composite Hose

Composite hose are light weight and flexible for easier handling. Their multi-layer construction prevents catastrophic failure.

Size availability	: 2” to 12”
Working pressure	: Max 250 PSI
Type of Approval	: EM, DNV, LLOYD, BV

Model

Multi Oil Hose	Multi Chemical Hose
Multi LPG Hose	Multi LNG Hose
Multi Biodiesel Hose	Vapour Recovery Hose



High Pressure Hose

PT. Simole Jaya Mandiri imported hose is recognised for its superior performance, reliability and long lasting durable products in the market. Now we do have ex-stock of high pressure hose in terms of size, type, material and working pressure which is considered a full range for the market.

Size availability :1/8" to 3"

Working Pressure: Max 2300 Bar

Material : Synthetic

Rubber, Thermoplastic

PTFE

Type of Approval :

ABS, BV, DNV, GL, RINN



Model

Synthetic Rubber Hose

Synthetic Rubber Hose is actively used in production and distribution of hydraulic oil for conveying power in high/very high pressure hydraulic circuit and fluids in refrigeration units.

One Ply high tensile steel braids Two Ply high tensile steel braids Four ply High tensile steel braids Six ply high Tensile steel hose Water Blasting Hose
Refrigents Hose



PTFE Hose

PTFE Hose is widely used in containers and corrosive material. Its properties are non-reactive and non-stick coating or surface. With our advanced facilities, we are able to swage and flare the PTFE hose fitting locally according to customer requirement.



Smooth Bore PTFE Hose

Convuluted PTFE Hose

Cryogenic Gas Hose

PTFE Steam Hose



Thermoplastic Hose

Thermoplastic Hose is preferred for the conveying of liquid, mainly for the hydraulic, pneumatic, solvents, paints, chemical & gas sector due to its light weight and excellent resistance to fatigue stress, alternating flexing and vibration.



R7 & R8 (SAE 100 Non Conductive Jack Hose (10,000 psi)

Sewer Jet Cleaning (2500-4000psi)

Water Jet Cleaning Hose (max 2700 bar)

Grease Hose

Micro Bore Hose

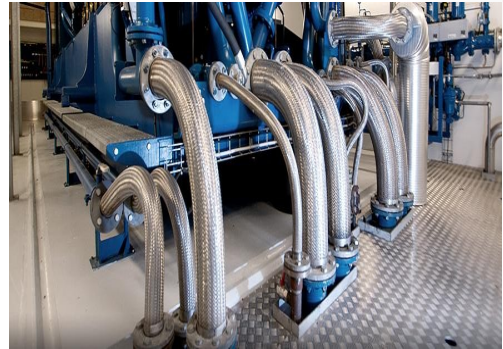
Paint Spray Hose

Pilot Line Glide



Stainless Steel Hose

PT. Simole Jaya Mandiri offers a complete line annular corrugated stainless steel metal hose and bellow assemblies in a wide variety of alloys, sizes and extra long unsegmented lengths. Fully equipped facility specializing in assembling flexible stainless steel metal hose.



Size availability	: 1/4" to 28"
Working Pressure	: 1000PSI
Temperature	: -200 C to 600 C
Material	: SS 304,SS321 & Upon Request
Type Of Approval	: EM,BS,DNV&etc.
Super Annural Multi-ply Bellow	
Turf2 Ply Turf Bellow	
Turf Tube Low Core Bellows	
UFO Flex Square type Bellows	
Soft Tube Bellows Expansion	

Industrial PVC Hose

PVC Hose are widely using in food industry, powder transport, and factory facilities, machine and etc. There are multiple types pf PVC hose applied in different application.



Size availability	: 1/4" to 6 "
Working pressure	: Max 15 Bar
Type Of Approval	: Food Grade (JFHA no S12-3844)

Model

Spring Hose

Braided Hose

Spray Hose

Paint Hose

Rock Hose

PVC Reinforced Hose



Quick Coupling

Quick Couplers are used in a fluid or pneumatic system to quickly connect lines without losing fluid or fluid pressure. It can be used under a variety of pressure and temperature conditions. Quick-action couplers are ideal for use in applications where fluid loss during connection or disconnection is undesirable. There are various types of coupling depending on pressure and application namely :



Size availability	: 1/8” to 8”
Working Pressure	: Max 10,000 PSI
Material	: Mild Steel, Carbon Steel, Brass, Monel, Stainless Stainless Steel, Cast Iron, etc.

High Pressure Hydraulic Coupling

High Pressure Hydraulic Coupling is designed for high working pressure where it can offer a fast, clean and safe working environment. It consist of two mating halves: the plug (male)half and the coupler (female) half.

Model

Pneumatic Coupling

Pneumatic Coupling' s function is to avoid hose whip when fittings are uncoupled by gradually decompressing the air in the downline hose.



Dry Disconnect Coupling

Dry Disconnect Coupling is a product generally safe and environmentalfriendly of handling aggressive mediums for the chemical and petrochemical industries.



Hammer Union

Hammer Union have there lug nuts and coarse Acme threads for faster make-up and break-out using only a hammer.Wrench or other tools are not needed. It provides pressure-tight,positive sealing.Hammer unions are designed for abrasive,high-pressure aplications where welded connections are not desired.



Quick Couplings & Others

Cam and Groove Coupling(Camlock)

Size Availability : $\frac{3}{4}$ " – 6"

Material : S316,Alumunium,Brass

Working Pressure : max250psig



Sand Blast Coupling

Size Availability : $\frac{3}{4}$ " -1 $\frac{1}{2}$ " Crawl Coupling(Air)

Size Availability : $\frac{3}{4}$ " – 1 $\frac{1}{2}$ "

Material : Steel/Brass/Plated Iron

Working Pressure : max 200 psig



Ground Joint Coupling (Steam)

Size Availability : $\frac{3}{8}$ " – 2"

Material : SS316/Plated Steel,Iron

Working Pressure : max 250 psig



Pin Lug Coupling

Size Availability : 1 $\frac{1}{2}$ " – 6"

Material : Steel/ Alumunium



Bauer Coupling

Size Availability : 2"-12"

Material : Steel



Quick Couplings & Others

King Combination (KC) Nipples

Size Availability : 1 ½” – 6”

Material : SS 316,Steel



Sanitary Fitting

Size Availability : 1 ½” – 6”

Material : Steel/Alumunium



Tank Truck Fitting

Size Availability : 3”-4”

Material : SS316,Alumunium



Swivel Joint

Size Availability : 1 ½ - 10”

Material : Steel/Alumunium/SS



Fire Equipment

Fitting Size Availability : 1” - 4”

Material : Gunmetal,Brass,Alumunium



Swaged Fitting and Adaptor

Apart from selling Hose. PT.

Simole Jaya Mandiri also assemble various types of fitting in order to match with the existing connection. With our machinery, we are able to produce custom-made fitting as well :

Size availability	:1/8" to 10"
Material	:Mild Steel/Carbon Steel/Stainless Steel/Stainless Steel/Brass

Model

Hydraulic Swaged Fitting(Metric,BSP,JIC,JIS,SAE,NPT)

Adaptor(Metric,BSP,JIC,JIS,SAE,NPT,ORFS)

Composite/Rubber Hose Swaged Fitting (Flanges)

Flared End PTFE Hose



Valves

Valves are found in virtually every industrial process, including water and sewage processing, mining, power generation, processing of oil, gas and petroleum, food manufacturing, chemical and plastic manufacturing and many other fields.

Size availability : 3/4” to 36 “

Model

- Gate Valve
- Globe Valve
- Swing Check Valve
- Butterfly Valve
- Plug Valve
- Ball Valve
- Needle Valve
- Needle Valve
- Check Valve
- Pinch Valve
- Safety/Relief Valve
- Traps Valve



Clamp

Is a fastening device to hold or secure objects tightly together to prevent movement or separation through the application of inward pressure. There are many types of clamps available for many different purposes.



Size availability : ¼” to 10 “

Model

- ❖ Hose Clamp (SS 304)
- ❖ Specialty Clamp
- ❖ Heavy Duty Clamp
- ❖ Pipe Clamp
- ❖ Spring Clamp
- ❖ Band and Buckle



Industrial Accessories

Rubber Expansion Joint

Union Bellow

Single Bellow

Double Bellow

Custom – made Bellow



Stainless Steel Expansion Joint

Expansion Joint with Floating flanges

Expansion Joint with Fixed End

Expansion Joint with Weld End

Expansion Joint with Thread End (BSP/NPT)

Expansion Joint with Welding ends



PT. Simole Jaya Mandiri are one of the leading stockists of **Stainless Steel Strips, Sheets, Plates & Coils**

These Stainless Steel Strips, Sheets, Plates & Coils are manufactured in various range and grades of Stainless Steel such as 304, 304L, 304H, 309S, 310S, 310H, 316, 316L, 316H, 316Ti, 317L, 321, 321H, 347, 904L, etc. As International Standards. Our association is considered as a part of the main dealers and suppliers of wide range of Stainless Steel Sheets, Plates and Coils.



Pipe HDPE

HDPE pipe can be used for the installation of water lines clean with hot or cold temperatures. HDPE pipe is also used for the installation of lane usage



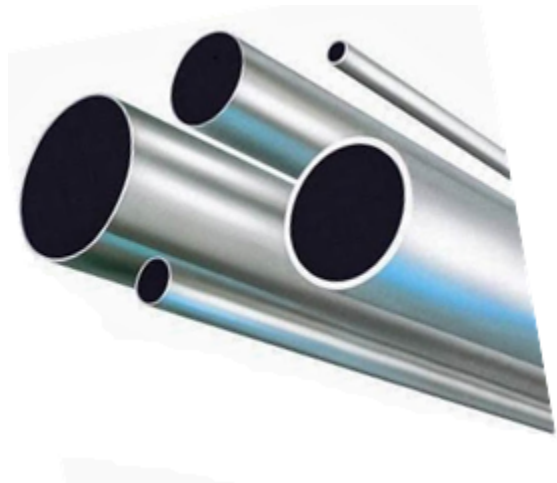
Pipe Spiral Welded

Despite its name, does not mean that this pipe-shaped spiral, but rather refers to the raw materials of manufacture which is a strip steel plate that is formed into a spiral and then spliced to form a pipe.



Pipe Galvanize

Coated steel pipe using a zinc coating with the aim to protect steel from corrosion





Simole Jaya Mandiri

Contact Us

Office & Workshop :

Jl.Karang Anyar A No.29 A

Sawah Besar Jakarta Pusat

Telp :

021 2268 6189

Phone :

0812 1997 4310

Fax :

021 6290 364

Email :

sales@simolejayamandiri.co.id